

## Design, development and evaluation of ethosomal gel of clotrimazole for topical fungal infection

Priyanka Maurya\*, Jai Narayan Mishra, Ashutosh Kushwaha

Kailash Institute of pharmacy and management, Gida, Gorakhpur, Uttar Pradesh, India

### Abstract

**Background and Objective:** Applying ethosomal Gels in transdermal drug delivery systems has evoked considerable interest because of their good water- solubility and biocompatibility. The aim of present study was to prepare and characterize ethosomes of fungal drug clotrimazole, which may deliver these drugs to targeted site more efficiently than and also overcome the problems related with oral administration of CLZ.

**Methodology:** In the present investigation efficiency of ethosomes as novel lipid carriers for topical delivery of clotrimazole has been evaluated. Ethosomes were optimized by varying concentration of phospholipid and ethanol. Ethosomal formulation (F8) with soya phosphatidylcholine (3%) and ethanol 20% was optimized.

**Result:** On characterization spherical, unilamellar vesicles with smooth surface were observed under transmission electron microscopy (TEM) in the range of 5 to 200 nm. Zeta potential of F8 formulation was found to be - 4.16 mv. Drug entrapment efficiency of F8 formulation was found to be 90%. The optimized formulation exhibited pH (8) and viscosity (73,200 cps). Physical evaluation of ethosomal gel was done. In vitro release of F8 formulation was carried out which showed  $92 \pm 0.79\%$  release over a period of 8 hours. Skin irritation study revealed no irritation from ethosomal gel. From the data obtained after plotting various models it was observed that the Higuchi model was found to be best suited with  $R^2$  value of 0.9678. Stability studies performed at  $40 \text{ }^\circ\text{C} \pm 1 \text{ }^\circ\text{C}$  and  $25 \text{ }^\circ\text{C} \pm 1 \text{ }^\circ\text{C}$  for 3 months showed good storage stability. No phase separation was observed in the optimized ethosomal gel.

**Conclusion:** Suggested that ethosomes as efficient carriers for clotrimazole topical delivery.

**Keywords:** Vesicle, clotrimazole, *in vitro* release, transmission electron microscopy, topical delivery

### Introduction

Over the past years, topical delivery of drug has caused more and more attention; this has the advantage that high concentration of drugs can be localized at the site of action, reducing the systemic side effects compared to parenteral or oral drug administration. Topical delivery can be defined as the application of a drug containing formulation to the skin to treat cutaneous disorders (e.g. psoriasis, acne) with the intent of containing the pharmacological or another effect of the drug to the surface of the skin or with in the skin. Intensive research over the past two decades led to the development of novel carriers, the ethanolic liposomes that have been termed ethosomes.<sup>(1)</sup>

Ethosomes are novel lipid carriers composed of ethanol, phospholipids and water. These are soft, malleable vesicles tailored for enhanced delivery of active agents. They are reported to improve the skin delivery of various drugs. The high concentration of ethanol makes the ethosomes unique, as ethanol is known for its disturbance of skin lipid bilayer organization. Ethosomes can entrap drug molecule with various physicochemical characteristics i.e. of hydrophilic, lipophilic, or amphiphilic. The size range of ethosomes may vary from tens of nanometers to microns.

The present investigation was to design the ethosomal gel containing clotrimazole using different concentration of ethanol and phospholipid. Clotrimazole is a polar *bis*-triazole antifungal drug. Studies have shown that clotrimazole exhibits specificity as an inhibitor of the fungal as opposed to mammalian cytochrome P- 450 mediated reactions, including those involved in steroid biosynthesis and drug metabolism. Clotrimazole is used in treatment of

candidiasis seen in the oral cavity, pharyngeal, vaginal and urinary tract infection.

Clotrimazole was selected for formulation of topical ethosomal gel because patients with diseases candidiasis and urinary tract infection etc., the dose is given at a higher level due to its low permeability. The ethosomal approach was selected to enhance the permeability of clotrimazole that increase bioavailability, reduce the side effects, reduce large doses and increase the therapeutic efficacy.

In the present study, ethosomes bearing clotrimazole was prepared by cold method and optimized. They were evaluated for permeation enhancement over marketed formulation and the optimized formulation (F8) for vesicle skin interaction studies and stability studies.

### Material and Method

Clotrimazole (CLZ) was obtained as a gift sample from Belco Pvt. Ltd., India. Soya lecithin was obtained as a gift sample from Hi Media laboratories Pvt. Ltd. Mumbai, India. Ethanol was purchased from Loba Chemie Pvt. Ltd., Mumbai, India.

### Preformulation studies of drug sample

Preformulation study is the first step in the rational development of dosage forms of a drug substance. It can be defined as an investigation of physical and chemical properties of a drug substance alone and when combined with excipients. The overall objective of preformulation testing is to generate information useful to the formulator in developing stable and bioavailable dosage forms. Following preformulation studies were performed.

### Organoleptic properties

The organoleptic studies like general appearance like nature, color, odor, etc. were performed by visual observations and compared with standard of drug given in pharmacopoeia for identification of drug.

**Color:** Small quantity of drug was taken on butter paper and viewed in well illuminated place.

**Odor:** Very less quantity of drug was smelled to get the odor.

### Solubility studies

Semi quantitative determination of the solubility was made by adding solvent to glass tube containing accurately weighed amount of solute. The system is vigorously shaken and examined visually for any undissolved solute particles. The solubility is expressed in terms of ratio of solute and solvent. The solubility study of Clotrimazole was performed in methanol, ethanol, acetone, hexane, ether, chloroform, propylene glycol, distilled water, 0.1 N HCL, phosphate buffer solution pH 5.5, 6.8, 7.4, separately by keeping the drug containing test tube on vortex mixture.

### Determination of melting point

For determination of melting point USP method was followed. Small quantity of drug was placed into a sealed capillary tube. The tube was placed in the melting point apparatus. The temperature in the apparatus was gradually increased and the observation of temperature was noted at which drug started to melt and the temperature when the entire drug gets melted was noted.

### Determination of partition co-efficient <sup>[45]</sup>

The known quantity of clotrimazole was added into 20 ml of octanol and it was mixed with 20 ml of phosphate buffer pH 7.4 in a separating funnel. Then two phases were allowed to equilibrate at 37 °C for 2 hours with intermittent shaking. The concentration of drug in the aqueous phase and organic phase was determined by UV spectroscopic method at  $\lambda_{max}$  260 nm after necessary dilution. The apparent partition coefficient was calculated as the ratio of drug concentration in each phase by the following equation -

### $K_p = \frac{C_{organic}}{C_{aqueous}}$

$C_{organic}$  is concentration of drug in organic phase  
 $C_{aqueous}$  is concentration of drug in aqueous phase

### Determination of drug pH

The pH of Clotrimazole was determined using digital pH meter for freshly prepared 1% solution of Clotrimazole in methanol.

### Infrared spectroscopic analysis

The Fourier infra red spectrums of moisture free samples of

clotrimazole, soya lecithin, carbopol, methyl paraben, propyl paraben and mixture of clotrimazole, carbopol, methyl paraben, propyl paraben were recorded on IR spectrophotometer. Infrared spectroscopy of different compounds was performed for identification of that particular compound. Spectroscopy was done using KBr pellets. Various peaks in FTIR spectrum were interpreted for identification of different group in the structure of clotrimazole. FTIR Spectroscopy can also be used to investigate and predict any physicochemical interactions between different components. The scanning range varies from 4000– 400  $cm^{-1}$  and the resolution was 1  $cm^{-1}$ .

### Analysis by UV-Visible spectrophotometry Preparation of standard curve in ethanol

#### Standard stock solution of clotrimazole

Accurately weighed 100 mg of clotrimazole and was dissolved in 100 ml of methanol, from this stock solution 10 ml was withdrawn and transferred into 100 ml volumetric flask. Volume was made with ethanol in order to get standard stock solution containing 100  $\mu g/ml$ .

#### Standard graph of clotrimazole

Form this standard stock solution, a series of dilution(10, 20, 30, 40, 50  $\mu g/ml$ ) were prepared using methanol. The absorbance of these solutions was measured spectrophotometrically against blank of methanol at 260 nm for clotrimazole.

#### Determination of wavelength maxima of clotrimazole

The solution was scanned in the range of 200 to 400 nm to fix the maximum wavelength and UV spectrum was obtained.

### Method of preparation of ethosomes of clotrimazole

Ethosomal formulations were prepared by using the cold method. The ethanolic vascular system was composed of phospholipid (2.0% to 4% W/V), ethanol (20% to 40% V/V), propylene glycol (20% V/V), drug (clotrimazole, 0.5% W/V) and distilled water to 100% (V/V). Phospholipid was dissolved along with the drug in ethanol. This mixture was heated to 40 °C  $\pm$  1 °C and a fine stream of distilled water was added slowly, with constant mixing at 700 rpm with a mechanical stirrer in a closed container. Mixing was continued for an additional 5 minutes, while maintaining the system at 40 °C  $\pm$  1 °C. The preparation was left to cool at room temperature for 30 min and then it was sonicated at 4 °C for five cycles of 3 minutes each with a minute rest between cycles using a probe sonicator.

Nine formulations were prepared using different concentration of phospholipid, ethanol, Propylene glycol, drug and distilled water proportion is given in Table no 1. The optimized formulation was selected for characterization and evaluation studies.

**Table 1:** Compositions of different ethosomal formulation of clotrimazole

Formulation code	Conc. of Phospholipid (W/V)	Conc. of Ethanol (V/V)	Conc. of Propylene glycol (V/V)	Conc. of drug (W/V)	Conc. of distilled water (V/V)
F 1	2%	20%	20%	0.5%	Upto 100%
F 2	3%	30%	20%	0.5%	Upto 100%
F 3	4%	40%	20%	0.5%	Upto 100%
F 4	2%	30%	20%	0.5%	Upto 100%

F 5	3%	40%	20%	0.5%	Upto 100%
F 6	4%	20%	20%	0.5%	Upto 100%
F 7	2%	40%	20%	0.5%	Upto 100%
F8	3%	20%	20%	0.5%	Upto 100%
F 9	4%	30%	20%	0.5%	Upto 100%

Preparation of the carbopol gel <sup>[47]</sup>

Carbopol 934 forms very good consistency transparent gel at low concentration. 1% carbopol gel base was prepared by dispersing 1 g carbopol934 in 90 ml hot distilled water in which 10 ml glycerol was previously added. Accurately weighed quantity of 0.02% methyl paraben and 0.01% propyl paraben was also added into it. The mixture was stirred until thickening occurred and then neutralized by the drop wise addition of 50% (w/w) triethanolamine to achieve a transparent gel.

The ethosomal formulation was slowly added in carbopol 934 gel base with gentle stirring. Finally, the ethosomal gel was mixed using a mechanical stirrer for 5 min.

#### Evaluation of ethosomes Drug entrapment efficiency

The total volume of the ethosomal suspension was measured. 5ml of this formulation was diluted with distilled water up to 8 ml and centrifuged at 15,000 rpm for 45 min at 4°C using a cooling centrifuge. After centrifugation, the supernatant and sediment were recovered, their volume was measured. Then sediment was lysed using n-propanol and filtered through a 0.45 µm nylon disk filter. The concentration of clotrimazole in the supernatant and sediment was analyzed by UV-spectroscopic method at 260 nm. The percent drug entrapment was calculated using the following equation:

$$\% \text{ Entrapment efficiency} = \frac{\text{Amount of entrapped drug recovered}}{\text{Total amount of drug}} \times 100$$

#### Vesicular shape and surface morphology

Ethosome vesicles were visualized using transmission electron microscopy (TEM Philips Technai electron microscope, Netherlands). A drop of ethosomal solution was dried on a microscopic carbon coated grid, to get adsorbed and the surplus was removed by filter paper. A drop of 1% aqueous solution of phosphotungstic acid (PTA) was then added and left in contact with the sample for 5 minutes. The excess solution was removed and the sample was dried at room condition before the vesicles were viewed under TEM operating at an acceleration voltage of 200 KV.

#### Infrared spectroscopic analysis

The Fourier infra red spectrums of moisture free samples of clotrimazole, soya lecithin, carbopol, methyl paraben, propyl paraben and mixture of clotrimazole, carbopol, methyl paraben, propyl paraben were recorded on IR spectrophotometer. Infrared spectroscopy of different compounds was performed for identification of that particular compound. Spectroscopy was done using KBr pellets. Various peaks in FTIR spectrum were interpreted for identification of different group in the structure of clotrimazole. FTIR Spectroscopy can also be used to investigate and predict any physicochemical interactions between different components. The scanning range varies from 4000–400 cm<sup>-1</sup> and the resolution was 1 cm<sup>-1</sup>.

#### Zeta potential measurement

Zeta potential is the measure of the magnitude of the electrostatic or charge repulsion or attraction between particles and, known to affect stability. Its measurement brings detailed insight into the causes of dispersion, aggregation or flocculation, and can be applied to improve the formulation of ethosomes. Almost all particulate or macroscopic materials in contact with a liquid acquire an electronic charge on their surfaces. In general, particles could be dispersed stable when the absolute value of zeta potential is above 30 mV. Moreover, the zeta potential below 20mV is of limited stability and that below 5mV show rapid aggregation. However, several studies have reported that the zeta potentials of ethosome formulations ranged between -10 to -20 mV. Zeta potential of ethosomal formulation was determined using Zeta Sizer (Nano-ZS, Malvern, U.K.) at 25 °C.

#### Physical evaluation of ethosomal gel

The ethosomal gel formulation of clotrimazole was evaluated for organoleptic characteristics, occlusiveness and washability.

#### Measurement of pH of the ethosomal gel

1 g clotrimazole ethosomal gel was mixed in 100 ml distilled water with homogenizer. Then the electrode was immersed in the prepared gel solution and readings were recorded from digital pH meter in triplicate and average value was calculated.

#### Viscosity study

Viscosity measurements were done on Brookfield viscometer by selecting suitable spindle number and rpm. 50 g of preparation was kept in 50 ml beaker which was set till spindle groove was dipped and rpm was set and dial reading was measured after three minutes. From the reading obtained, viscosity was calculated by using factor. The procedure was repeated three times and observations are recorded as mean.

#### Spreadability

It is the term expressed to denote the extent of area to which gel readily spreads on application to skin or affected part. The therapeutic efficacy of a formulation also depends upon its spreading value. Spreadability is expressed in terms of time in seconds taken by two slides to slip off from gel and placed in between the slides under the direction of certain load. Lesser the time taken for separation of two slides, better the spreadability.

It is calculated by using the formula:

$$S = M \cdot L / T$$

Where M = wt. tied to upper slide L = length of glass slides  
T = time taken to separate the slides 0.1 g of ethosomal gel was pressed between two slides (divided into squares of 5 mm sides) and left for about 5 minutes where no more

spreading was expected. Diameters of spreaded circles were measured in cm and were taken as comparative values for spreadability. The standardized weight tied on the upper slide was 125gm. The results obtained are average of three determinations.

### Extrudability study

The extrudability of ethosomal gel was determined by filling ethosomal gel in the collapsible tubes. The extrudability of the ethosomal gel was determined in terms of weight in grams required to extrude a 0.5 cm ribbon of gel in 10 second.

### Percentage yield

The empty container was weighed in which the ethosomal gel formulation was stored then again the container was weighed with ethosomal gel formulation. Then subtracted the empty container weighed with the container with gel formulation then it gives the practical yield. Then the percentage yield was calculated by the formula.

$$\text{Percentage yield} = \frac{\text{Practical yield}}{\text{Theoretical yield}} \times 100$$

### Homogeneity and grittiness

A small quantity of ethosomal gel was pressed between the thumb and the index finger. The consistency of the ethosomal gel was noticed (whether homogeneous or not), if there was any coarse particles appeared on fingers. Also, the homogeneity could be detected when a small quantity of the ethosomal gel was rubbed on the skin of the back of the hand. The grittiness of prepared ethosomal gel was also observed in the same manner.

### Skin irritation study

Skin irritation study was carried out on healthy rats (150-200 g) of either sex. The animals are maintained on standard animal feed and had free access to water. Before one day of starting the study hair was shaved from back of rats and area of 5 cm<sup>2</sup> was marked on both the sides, one side served as control while the other side was test. Prepared ethosomal gel was applied for 7 days and the site was observed for any sensitivity and the reaction if any, was graded as 0, 1, 2, 3 for no reaction, slight patchy erythema, slight but confluent or moderate but patchy erythema and severe erythema with or without edema, respectively.

### In vitro release studies Skin permeation studies

Franz diffusion cell was used for permeation studies. Study was conducted using prepared rat skin. 28 ml of PBS 7.4 was taken in receptor compartment and was continuously stirred with a magnetic stirrer and equilibrated at 37±1 °C with a recirculating water bath. The prepared skin was mounted with stratum corneum facing upward into the donor compartment. 1 g of ethosomal gel formulation was taken in donor compartment and covered with parafilm to avoid any evaporation process. 5 ml sample was withdrawn

through the sampling port at predetermined intervals over 8 hours and each sample was replaced with equal volume of fresh dissolution medium. Then the samples were analyzed for drug content by using phosphate buffer as blank with UV-Visible double beam spectrophotometer at 260 nm. Similar study was performed with marketed clotrimazole gel.

### Skin deposition studies

The amount of clotrimazole retained in the skin was determined by skin deposition studies. At the end of permeation studies (8 hrs.), the skin was washed with methanol and homogenized for 5 min using an electric stirrer. The resulting solution was centrifuged at 7000 rpm for 10 min and supernatant was analyzed for drug content by UV-VIS double beam spectrophotometer at 260 nm.

### Drug release kinetics [48]

The release kinetic was studied by various kinetic models as zero order plot, first order plot, Higuchi plot and Korsmeyer-peppas plot. To study the release kinetics of the ethosomal gel data obtained from in-vitro drug release studies were plotted in various kinetic models: zero order as cumulative amount of drug releases Vs. time, First order as log cumulative % of drug remaining Vs. time, Higuchi model as cumulative % of drug released Vs. square root of time and Korsmeyer-peppas model as log cumulative % drug release Vs. log time. The best fit model was confirmed by the value of correlation coefficient near to 1.

### Stability [49]

The stability study was carried out for ethosomal gel formulation. The most satisfactory formulation was sealed in a glass vial to a temperature of 40 °C for 1 month, then at 25 °C for 1 month, then at 40 °C for 1 month. After this ethosomal gel was exposed to ambient room temperature and liquid exudates separating was noted. At the end of 3 months, the samples were analyzed for physical characteristic study and the drug content.

## Results and Discussion

### Preformulation studies organoleptic properties

The clotrimazole drug colour is White crystalline white powder and the order is odourless.

The observations noted were compared to the specifications given in the pharmacopoeia to confirm the identity of the drug and it was found that observations noted complied with the specifications.

### Solubility studies

Solubility studies are performed to determine the solubility of drug in different solvents. The solubility is expressed in terms of ratio of solute and solvent. Clotrimazole was found to be soluble in methanol, acetone, 0.1 N HCL, ethanol, distilled water, hexane, PBS of pH 5.5, 6.8, 7.4, chloroform, ether and propylene glycol. The solubility profile of clotrimazole is given in the table 4.

**Table 2:** Solubility profile of clotrimazole

S.NO.	Quantity of drug	Solvent	Quantity of solvent	Inference
1.	50 mg	Methanol	5 ml	Freely soluble
2.	50 mg	Acetone	5 ml	Soluble
3.	50 mg	0.1 N HCL	5 ml	Sparingly soluble
4.	50 mg	Ethanol	5 ml	Sparingly soluble
5.	50 mg	Distilled water	5 ml	Slightly soluble
6.	50 mg	Hexane	5 ml	Very slightly soluble
7.	50 mg	PBS pH 5.5	5 ml	Slightly soluble
8.	50 mg	PBS pH 6.8	5 ml	Slightly soluble
9.	50 mg	PBS pH 7.4	5 ml	Slightly soluble
10.	50 mg	Chloroform	5 ml	Sparingly soluble
11.	50 mg	Ether	5 ml	Slightly soluble
12.	50 mg	Propylene glycol	5 ml	Slightly soluble

**Melting point**

Melting point of clotrimazole was found to be 148 °C. Melting point was measured three times and mean was noted. A sharp transition took place from solid to liquid at 148 °C, indicating that the sample was pure and free from impurities.

**Partition co-efficient**

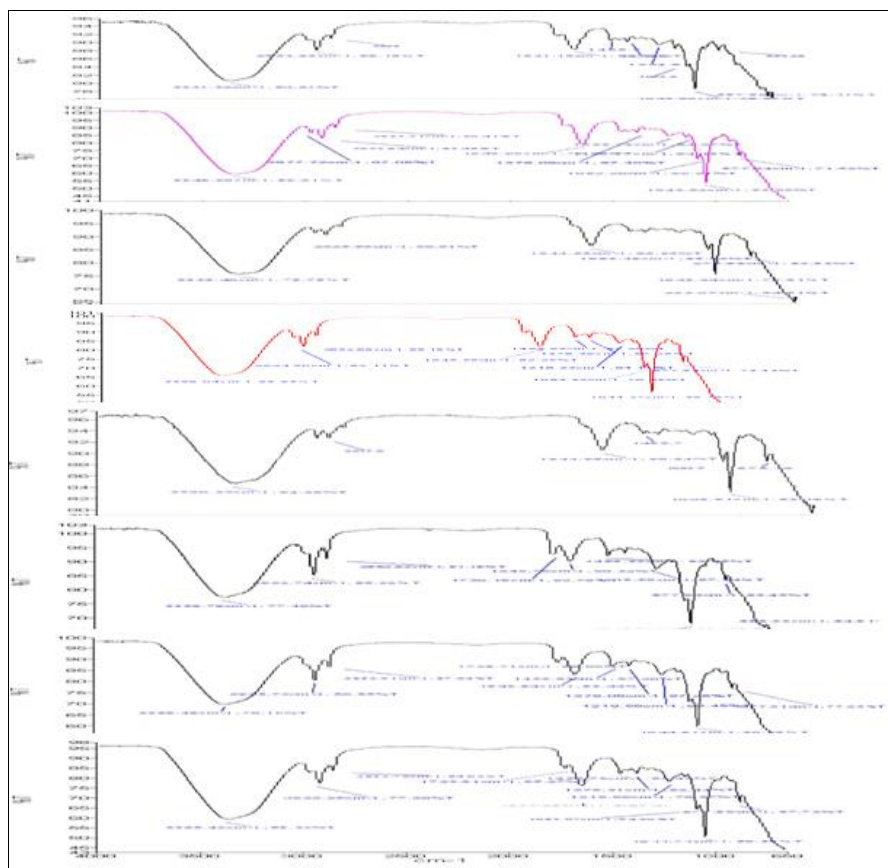
Partition co-efficient was measured three times and mean was noted. Hence partition coefficient was found to be  $1.01 \pm 0.01$ .

**Determination of pH**

The pH was measured three times and mean was noted. Hence pH of clotrimazole was found to be 6.8.

**FTIR analysis**

FTIR spectroscopic analysis was carried out to characterize drug. The FTIR spectra obtained was compared with that given in pharmacopoeia for clotrimazole. Diagnostic peaks and finger print regions were found identical. These characteristics peaks are useful in identification of drug. FTIR of carbopol 934 and mixture containing clotrimazole and carbopol 934 was done for drug compatibility studies. The results obtained showed that there occur no interactions between the components when taken together. All the group were present at same value hence drug sample was genuine and free from any major type of impurities. All the FTIR values are given in the figure 1.

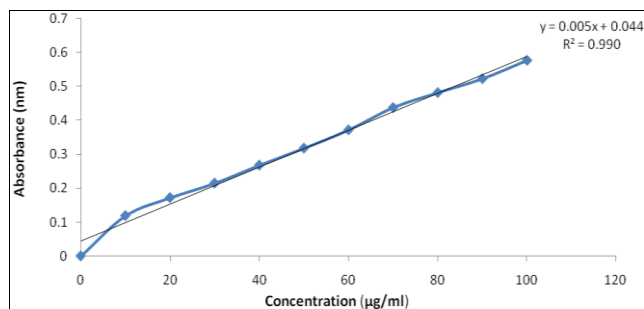
**Fig 1:** FTIR analysis of all formulated ethosomes**Preparation of calibration curve in PBS 7.4**

Since PBS (7.4) is taken as dissolution medium for ethosomal gel, the standard curve was obtained to calculate

the concentration of unknown samples for dissolution studies and drug content.

**Table 3:** Absorbance of different dilutions of drug at 260 nm in PBS pH 7.4

S.no.	Concentration ( $\mu\text{g/ml}$ )	Absorbance (mean $\pm$ SD)(n=3)
1.	0	0
2.	10	0.119 $\pm$ 0.000
3.	20	0.172 $\pm$ 0.001
4.	30	0.215 $\pm$ 0.001
5.	40	0.268 $\pm$ 0.002
6.	50	0.318 $\pm$ 0.002
7.	60	0.372 $\pm$ 0.000
8.	70	0.438 $\pm$ 0.004
9.	80	0.482 $\pm$ 0.003
10.	90	0.523 $\pm$ 0.003
11.	100	0.577 $\pm$ 0.004

**Fig 2:** Standard calibration curve of clotrimazole at 260nm in P.B.S pH 7.4

### Evaluation of Ethosomes

#### Physical Evaluation of Ethosomal Gel

The ethosomal gel formulation of clotrimazole was evaluated

**Organoleptic characteristics** Colour = pale (yellow) to colourless

**Odour** = characteristic

**Appearance** = translucent

**Phase separation** = no

**Occlusiveness** = yes

**Washability** = washable

#### Determination of pH of gel base and ethosomal gel

The pH of gel base and freshly prepared F8 ethosomal gel was found to be 7.5 and 8.0 respectively.

#### Viscosity

The viscosity of carbopol 934 gel base and ethosomal gel bybrookfield viscometer was found to be 744,00 and 73,200 cps (centipoise).

#### Spreadability

The spreadability of ethosomal gel was found to be 14.79 g.cm<sup>2</sup>. The spreadability results showed that ethosomal gel was most effective i.e. it showed best result for spreadability.

#### Extrudability study

The extrudability of ethosomal gel was found to be positive.

#### Percentage yield

The % yield of ethosomal gel was found to be 97.18%.

#### Homogeneity and grittiness

Ethosomal gel was found to be homogeneous and no

grittiness was noted.

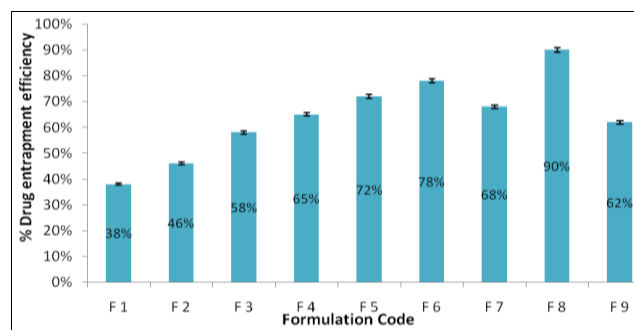
### Drug entrapment efficiency

Drug entrapment efficiency was calculated as by formula:

$$\% \text{ Entrapment efficiency} = \frac{\text{Amount of entrapped drug recovered}}{\text{Total amount of drug}} \times 100$$

**Table 4:** Effect of different ratio of phospholipids and ethanol on drug entrapment

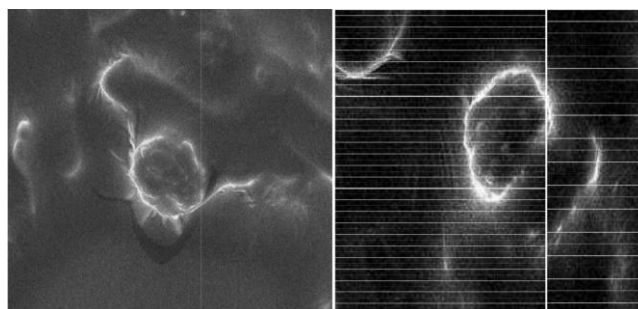
S.No.	Formulation code	Entrapment efficiency
1.	F 1	38%
2.	F 2	46%
3.	F 3	58%
4.	F 4	65%
5.	F 5	72%
6.	F 6	78%
7.	F 7	68%
8.	F8	90%
9.	F 9	62%

**Fig 3:** Drug entrapment efficiency of clotrimazole ethosomes

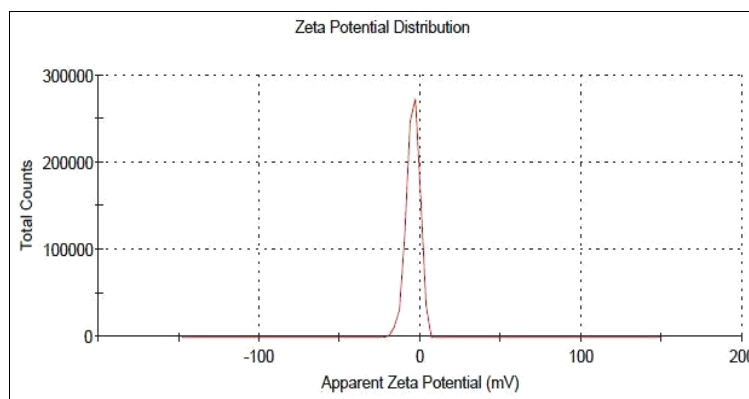
Drug entrapment efficiency of different formulations was calculated. Drug entrapment efficiency of formulation F8 was found to be highest. So, this formulation was selected for further ethosomal formulation.

### Scanning electron microscopy (SEM)

Ethosome obtained were spherical shaped, which could have an impact on drug-release. According to SEM images, Ethosome ranged in size from 154 to 162 nm. In an ideal condition ethosomes have an average size of 100 to 120 nm. An increase in ethanol concentration (from 20% to 45% ethanol) generally decreases the vesicle size of ethosome. However, a high concentration of ethanol leads to the interdigitation of the lipid bilayers and destabilization of the vesicles. No drug crystals were visible in SEM images, SEM image of optimised ethosomal formulation was shown in figure.5

**Fig 4:** SEM Image of ethosome F8 SEM image

**Zeta potential measurement**



**Fig 5:** Zeta potential of F8 formulation

Zeta potential of F8 formulation was found to be - 4.61 mv. Vesicular size of ethosomes of F8 formulation was in the range of 5 to 200 nm.

**Skin irritation study**

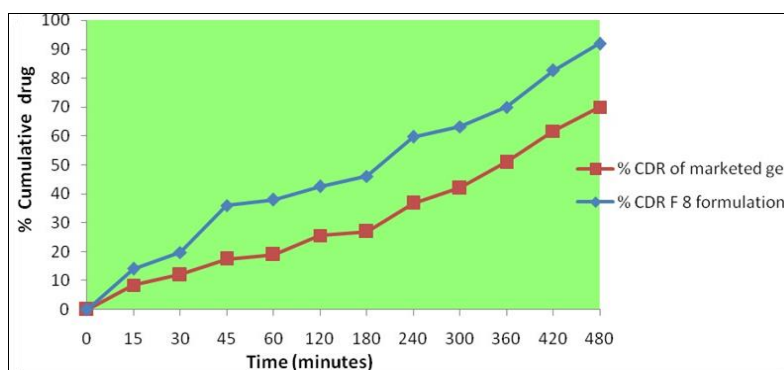
The results of skin irritation study revealed no irritation

from ethosomal gel.

**In vitro release study** *In vitro* release study was performed to determine amount of drug released at different interval of time.

**Table 5:** Release of drug from F8 formulation and marketed formulation.

Time (min.)	% cumulative release of F8 formulation in 7.4 pH PBS	% cumulative release of marketed clotrimazole gel in 7.4 PBS
0	0	0
15	14.16 ± 0.12	8.52 ± 0.02
30	19.84 ± 0.15	12.08 ± 0.06
45	36.02 ± 0.10	17.56 ± 0.20
60	37.98 ± 0.16	19.02 ± 0.09
120	42.54 ± 0.18	25.66 ± 0.31
180	46.09 ± 0.17	27.03 ± 0.38
240	59.76 ± 0.11	36.78 ± 0.49
300	63.34 ± 0.19	42.08 ± 0.15
360	70.03 ± 0.20	50.98 ± 0.18
420	82.72 ± 0.13	61.78 ± 0.42
480	92.00 ± 0.79	70.00 ± 0.22



**Fig 6:** % Cumulative drug release of F8 formulation vs marketed clotrimazole gel in 7.4PBS

Rate of release from different formulation are given in graph and table. It may be observed that release of drug occurred fast initially then after some time release become slower. From graph it was observed that cumulative release of clotrimazole was more from ethosomal formulation than marketed clotrimazole gel over a period of 8 hrs. Ethosomal formulation was designed to achieve high permeability and

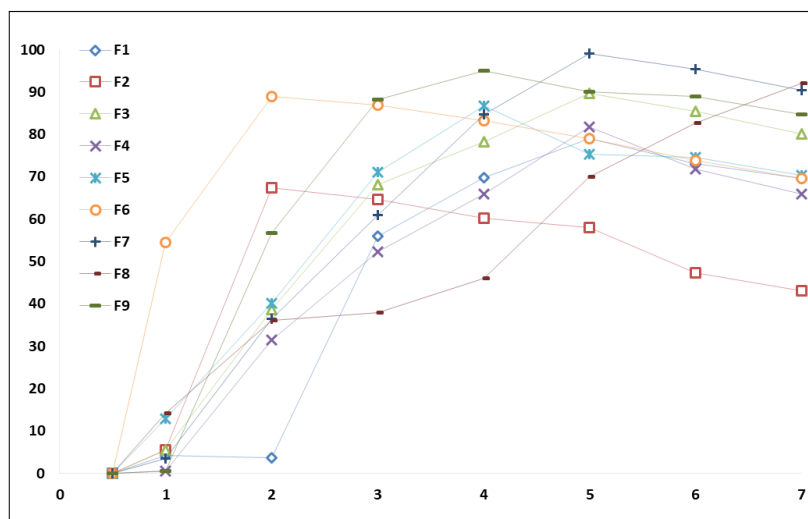
ultimately increase the bioavailability of the drug.

**Kinetics of Drug Release**

The release kinetic of F8 fomulation in phosphate buffer saline pH 7.4 was studied by various kinetic models. The following data was obtained.

**Table 6:** Drug release data of all formulation in P.B.S. pH 7.4

Time(in hrs)	F1	F2	F3	F4	F5	F6	F7	F8	F9
0.5	0	0	0	0	0	0	0	0	0
1	4.18	5.6	5.59	0.58	12.96	54.47	3.46	14.16	0.58
2	3.6	67.42	38.67	31.49	40.14	88.98	36.51	36.02	56.7
3	55.93	64.54	68.14	52.33	71.1	86.84	60.95	37.98	88.21
4	69.71	60.23	78.2	65.98	86.77	83.24	84.66	46.09	95.05
5	78.92	58.07	89.7	81.8	75.23	78.92	99.04	70.03	90.06
6	73.18	47.29	85.38	71.74	74.53	73.9	95.44	82.72	88.93
7	69.57	42.99	80.08	65.98	70.39	69.58	90.42	92	84.61

**Fig 7:** Drug release data of all formulation in P.B.S. pH 7.4**Table 7:** Drug release data of F8 formulation in P.B.S. pH 7.4 by using different Kinetic models

Time (minutes)	Log time	Square root of time	% cumulative release of F8	Log % cumulative release of F8	% cumulative remaining	Log % cumulative remaining
0	0	0	0	0	100	2
15	1.18	3.87	14.16	1.151	85.84	1.933
30	1.48	5.48	19.84	1.297	80.16	1.903
45	1.65	6.71	36.02	1.556	63.98	1.806
60	1.75	7.75	37.98	1.579	62.02	1.792
120	2.08	10.95	42.54	1.628	57.46	1.759
180	2.26	13.42	46.09	1.663	53.91	1.731
240	2.38	15.49	59.76	1.776	40.24	1.604
300	2.48	17.32	63.34	1.801	36.66	1.564
360	2.56	18.97	70.03	1.845	29.97	1.476
420	2.62	20.49	82.72	1.917	17.28	1.237
480	2.68	21.91	92.00	1.971	6.36	0.803

The data obtained for *in vitro* release were fitted into equation for the Zero order, First order, Higuchi and Korsmeyer peppas release models. The interpretation of data was based on the value of the resulting regression coefficients.

From these values, it was observed that the Higuchi model was found to be best suited with  $R^2$  value of 0.9678. Higuchi model be used to describe the drug dissolution from several types of modified release pharmaceutical dosage forms, as in the case of some topical systems.

#### Stability Studies

Stability studies performed at  $40\text{ }^\circ\text{C}\pm 1\text{ }^\circ\text{C}$ ,  $25\text{ }^\circ\text{C}\pm 1\text{ }^\circ\text{C}$  for 3 months showed good storage stability.

#### Physical appearance

It was observed that optimized gel kept for 3 months under  $40\text{ }^\circ\text{C}\pm 1\text{ }^\circ\text{C}$  as well as  $25\text{ }^\circ\text{C}\pm 1\text{ }^\circ\text{C}$  temperature conditions

showed no change in their physical appearance.

#### Phase separation

No phase separation was observed in the optimized ethosomal gel.

#### Content uniformity

Optimized ethosomal gel kept for 3 months under  $40\text{ }^\circ\text{C}\pm 1\text{ }^\circ\text{C}$  as well as  $25\text{ }^\circ\text{C}\pm 1\text{ }^\circ\text{C}$  temperature conditions were studied for uniformity of content. The results showed no significant changes in content uniformity at  $40\text{ }^\circ\text{C}\pm 1\text{ }^\circ\text{C}$  after 2 months. At  $40\text{ }^\circ\text{C}\pm 1\text{ }^\circ\text{C}$  content uniformity was found to show approximately ( $92\pm 0.79\%$  to  $89\pm 0.12\%$ ) decrease and at  $25\text{ }^\circ\text{C}\pm 1\text{ }^\circ\text{C}$  content uniformity decreased from ( $92\pm 0.79\%$  to  $78.90\pm 0.91\%$ ).

#### Conclusion

The present work on the preparation of topical ethosomal

gel containing clotrimazole is an attempt to utilize the immense potential of ethosomes as a carrier to increase the permeability. In this Contribution, we developed and evaluated the ethosomes containing clotrimazole to obtain the optimized formulation which suit for application as skin delivery system.

Clotrimazole is used for the treatment of local and systemic fungal infection. But one of the major problems for efficient drug delivery is low penetration rate of clotrimazole due to its high solubility and low permeability.

## References

- Vyas SP, Khar RK. Targeted and controlled drug delivery: Novel carrier systems in liposomes. New Delhi: CBS Publisher and distributors, 2002, 196-197.
- Dusane Abhijit Ratilal, Gaikwad Priti D, Bankar Vidyadhar H, Pawar Sunil P. A Review on: Sustained Released Technology, IJRAP. 2011; 2(6):1701-08.
- Jain NK. Advances in Controlled and Novel Drug delivery Systems. New Delhi: CBS Publisher and distributors, 2009, 278- 283.
- Xi Chen, Lihua Peng, Jianqing Gao. Novel topical drug delivery systems and their potential use in scars treatment, Asian Journal of Pharmaceutical Sciences, 2012; 7(3):155-67.
- Available from [www.pharmainfo.net/reviews/topical-drug-delivery-system-review](http://www.pharmainfo.net/reviews/topical-drug-delivery-system-review). Shailesh, Topical preparations are used for the localized effects at the site of their application by virtue of drug penetration into the underlying layers of skin or mucous membranes, 2008, 1-13.
- Available from <http://www.essentialdayspa.com/epidermis-c17.htm>, Skin anatomy and physiology. (Online), 2009.
- Barry BW, Novel mechanism and devices to enable successful transdermal drug delivery, Eur J Pharm Sci, 2001; 14: 101-14.
- Maghraby GM, Williams AC, Barry BW. Interactions of surfactants (edge activators) and skin penetration enhancers with liposomes, International Journal of Pharmaceutics. 2004; 276:143-61.
- Poonam Verma, Pathak K. Therapeutic and cosmeceutical potential of ethosomes: An overview, Journal of Advanced Pharmaceutical Technology & Research. 2010; 1(3):274-82.
- Upadhyay N, Mandal S, Bhatia L, Shailesh S, Chauhan P. A Review on Ethosomes: An Emerging Approach for Drug Delivery through the Skin, Recent Research in Science and Technology. 2011; 3(7):19-24.
- Ashoniya Sheer, Dr. Meenakshi Chauhan, Ethosomes as vesicular carrier for enhanced transdermal delivery of Ketoconazole - Formulation and Evaluation, IJPI's Journal of Pharmaceutics and Cosmetology. 2011; 1(3):1-14.
- Vimal kumar Shahwal, Ajay Samnani, Dr. BK Dubey, Mithun Bhowmick. Ethosomes: An Overview, International Journal of Biomedical and Advance Research. 2011; 2(5):159-68.
- Bendas ER, Tadros MI, Enhanced transdermal delivery of sulbutamol sulfate via ethosomes. AAPS Pharm Sci. Tech. 2007; 8:1-7.
- Shaik Samifar, Shaik Shaheda sultana, V Vasu Naik, K Madhuri. Ethosomes-an emerging approaches for vesicular delivery system, International Journal of Universal Pharmacy and Bio Sciences. 2013; 2(5):356-73.
- M Siva kranth, P Anjuma ara. Ethosomes: A novel vesicular drug delivery system, International journal of advanced pharmaceutics. 2012; 2(1):16-27.
- K Pavan Kumar, Pr Radhika. Ethosomes: A priority in transdermal drug delivery; International journal of advance in pharmaceutical sciences. 2010; (1):111-21.
- KD Tripathi. Essentials of Medical Pharmacology, Jaypee Brothers Medical Publishers (P) LTD., 6<sup>th</sup> edition reprint. 2010; 757:763-764.
- Dr Uma Tekur. Pharmacology of antimicrobial agents: antifungal & antiviral drugs, 2007, 1-21.
- Usha Rai, Dinesh Chandra, Shaundaya Kumar. Ethosomal gel: a novel tool for topical drug delivery, International Journal of Universal Pharmacy and Life Sciences. 2013; 3(2):349-65.
- Elsayed MM, Ossama YA, Naggar VF, Khalafallah NM. Deformable liposomes and ethosomes: Mechanism of enhanced skin delivery, International Journal of Pharmaceutics. 2006; 322:60-66.
- Naggar VF, Khalafallah NM. Lipid vesicles for skin delivery of drugs: Reviewing three decades of research, International Journal of Pharmaceutics. 2007; 332(1-2):1-16.
- Schreier H, Bovwstra J. Liposomes and niosomes as topical drug carriers: dermal and transdermal drug delivery, Journal of Control Release. 1994; 30:1-15.
- Dinesh D, Amit AR, Maria S, Awaroop RL, Mohd Hassan GD. Drug vehicle based approaches of penetration enhancement, International Journal of Pharmaceutical Sciences. 2009; 1(1):24-45.
- Barry BW. Is transdermal drug delivery research still important today, Drug Discover Today. 2001; 6(19):967-71.
- Biju SS, Sushama T, Mishra PR, Khar RK. Vesicular systems: An overview, Ind. J. Pharma Sci. 2006; 68(2):141-53.
- CJ Beukelman, MJ Hoekstra, K Reimer, S Mueller. Anti-inflammatory properties of a liposomal hydrogel with povidone- iodine for wound healing *in vitro* burns, International Journal of Pharmaceutics. 2008; 34(6):845-55.
- Lasic DD, Frederick PM, Stuart MCA, Barenholz Y, McIntosh TJ. Gelation of liposomes interior-A novel method for drug encapsulation, International Journal of Pharmaceutics. 1992; 312:255-58.
- Peppas NA. Characterization of cross-linked structure of hydrogels, Med. Pharm. 1986; 1:27-56.
- Mohammed MN. *In vitro* release of hydrophilic and hydrophobic drugs from liposomal dispersions and gels, Act. Pharm. 2006; 56:311-24.
- Mezei M, Gulasekharam V. Liposomes - a selective drug delivery system for the topical route of administration, Life Sci. 1980; 26:1473-77.
- Vermorken AJ, Hukkelhoven MW, Vermeesch AM, Goos CM, Wirtz P. The use of liposomes in the topical application of steroids, J. Pharm. Pharmacol. 1983; 36:334-36.
- Ganesan MG, Weiner ND, Flynn GL, Ho NFH. Influence of liposomal drug entrapment on percutaneous absorption, International Journal of Pharmaceutics. 1984; 20:139-154.
- Touitou E. Composition of applying active substance to

- or through the skin, US patent, 5, 540, 934, 1996.
34. Cevc G, Blume G, Schatzlein A, Gebauer D, Paul A. The skin pathway for systemic treatment patches and lipid based agent carriers, *Advanced Drug Delivery Reviews*. 1996; 18:349-78.
  35. Wollenberg B, Lang S, Schmitt B, Kastenbauer E, Zeidler R. *In vitro* studies of liposome-mediated gene transfer into head and neck cancer cell lines, *Eur. Arch. Otorhinolaryngol.* 1997; 1(S130-2):254.
  36. Touitou E. Composition of applying active substance to or through the skin, US Patent: 5,716,638, 1998.
  37. Hadgraft J. Passive enhancement strategies in topical and transdermal drug delivery, *Int J Pharm.* 1999; 184:1-6.
  38. Dayan N, Touitou E. Carrier for skin delivery of trihexyphenidyl HCl: Ethosomes vs. Liposomes, *Biomaterials*. 2000; 21:1879-85.
  39. Touitou E, Dayan N, Bergelson L, Godin B, Eliaz M. Ethosomes- novel vesicular carriers for enhanced delivery: Characterization and skin penetration properties, *J Control Release*. 2000; 65:403-18.
  40. Touitou E, Godin B, Dayan N. Intracellular delivery mediated by ethosomal carrier, *Biomaterials*. 2001; 22:3055-9.
  41. Touitou E. Drug delivery across skin, *Expert opinion on Biological Therapy*. 2002; 2:723-33.
  42. EL Laithy HM, El Shaboury KM. The development of Cutina lipogels and gel microemulsion for topical administration of clotrimazole, *AAPS Pharm Sci. Tech.* 2002; 3(4):35-43.
  43. Godin B, Touitou E. Ethosomes: new prospects in transdermal delivery, *Crit. Rev. Ther. Drug Carrier Syst.* 2003; 20(1):63-102.
  44. Jain S, Umamaheshwari RB, Bhadra D, Jain NK. Ethosomes: A novel vesicular carriers for enhanced transdermal delivery of an anti HIV agent, *Ind J Pharm Sci.* 2004; 66:72-81.
  45. Rivera PA, Martinez-Oharriz MC, Rubio M, Irache JM, Espuelas S. Clotrimazole encapsulation in PLGA microspheres by spray- drying, *J Micro encapsul.* 2004; 21(2):203-11.
  46. Ainbinder D, Touitou E. Testosterone ethosomes for enhanced transdermal delivery, *Drug Delivery*. 2005; 12:297-303.
  47. Jain S, Mishra D, Kuksal A, Tiwary AK, Jain NK. Vesicular Approach for Drug Delivery into or across the Skin: Current Status and Future Prospects, *Int. J Pharm.* 2006; 251-258, 269.
  48. Jain S, Tiwary AK, Sapra B, Jain NK. Formulation and evaluation of ethosomes for transdermal delivery of lamivudine, *AAPS Pharm Sci. Tech.* 2007; 8:111-19.
  49. Taglietti M, Hawkins CN, Rao J. Novel topical drug delivery systems and their potential use in acne vulgaris, *Skin Therapy Lett.* 2008; 13(5):6-8.